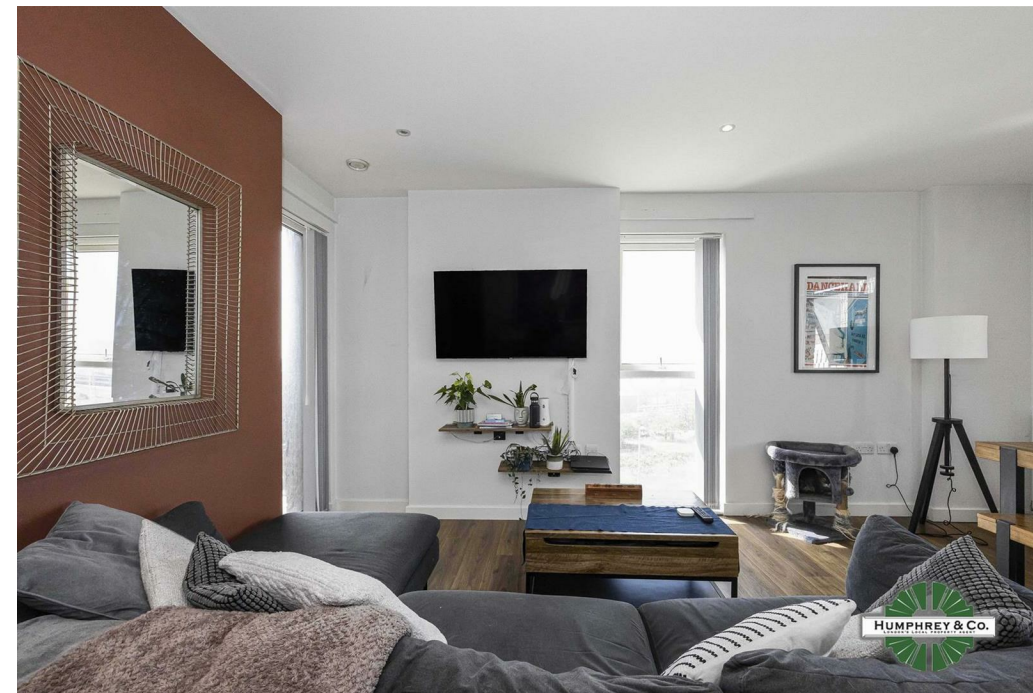


Dunedin Road Siskin Apartments

Approximate Gross Internal Area
Total = 81.6 sq m / 879 sq ft

This plan is for layout guidance only. Not drawn to scale unless stated. Windows and door openings are approximate. Whilst every care is taken in the preparation of this plan, please check all dimensions, shapes and compass bearings before making any decisions reliant upon them.

powered by:
THE360IMAGE
www.the360image.co.uk



Directions

Contact

125 Hoe Street
London
E17 4RX

E: sales@hcolondon.com

T: 02085 210 755

hcolondon.com



2 Bed
Flat
located in



Flat 17, Siskin Apartments 142 Dunedin Road

London

Price Guide £100,000

Leasehold



SHARED OWNERSHIP - 25% SHARE (contact us for details)

- Minutes away from Queen Elizabeth Olympic Park
- Two double bedroom, two bathrooms
- Open plan living room and kitchen
- Double Glazing
- Gas Central Heating
- Private Balcony
- Long Lease

Located on Dunedin Road, Leyton, in a vibrant new development, this modern TWO BEDROOM TWO BATHROOM apartment offers a delightful living experience only minutes away from Queen Elizabeth Olympic Park. Built in 2020, the property boasts a contemporary design and is in excellent condition, making it an ideal choice for those seeking a stylish home.



Energy Efficiency Rating		Current	Potential
Very energy efficient - lower running costs			
(92 plus) A		86	
(81-91) B			
(69-80) C			
(55-68) D			
(39-54) E			
(21-38) F			
(1-20) G			
Not energy efficient - higher running costs			
England & Wales		EU Directive 2002/91/EC	

